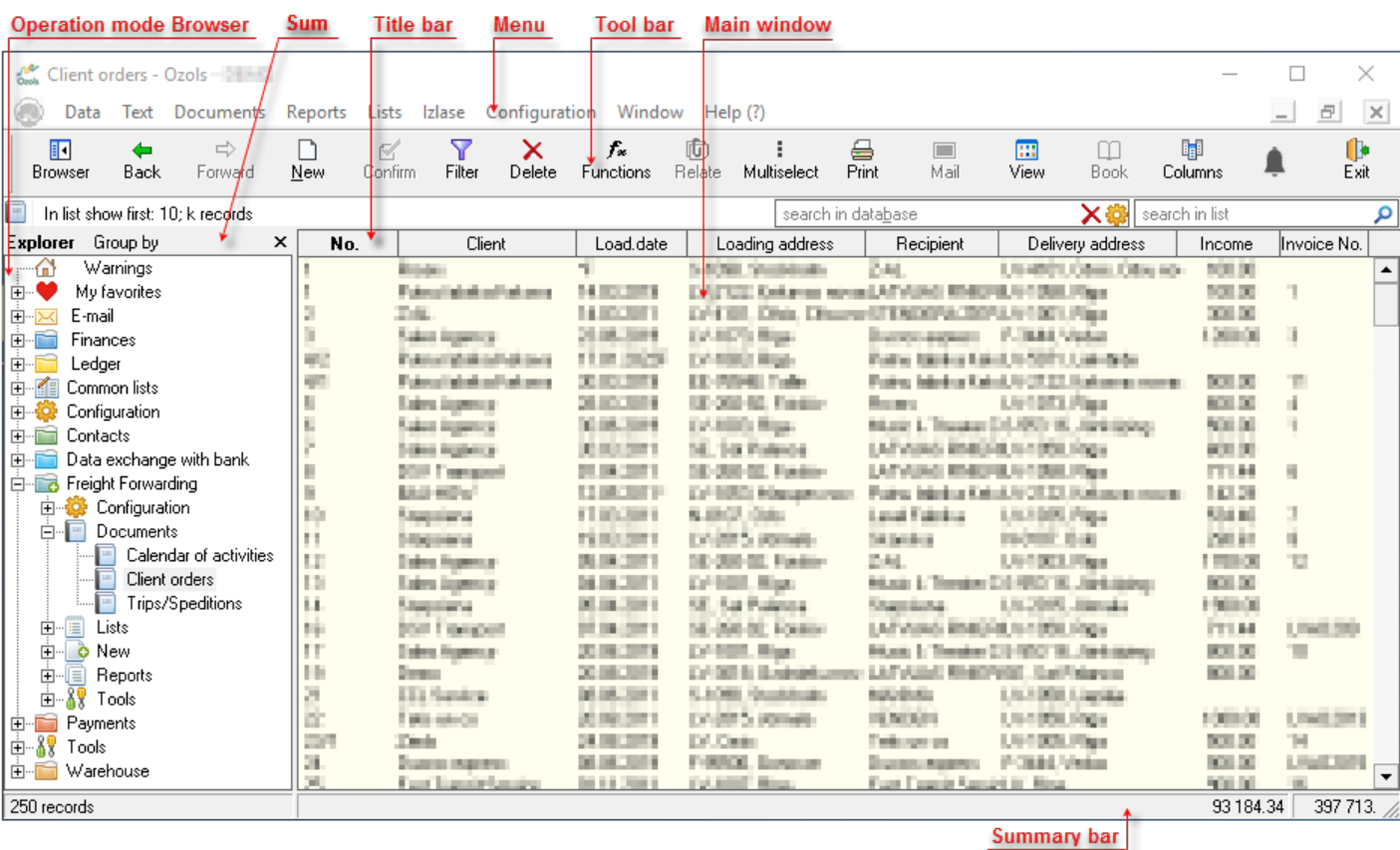


# Main window layout and commands

## Browser

The **Operation Mode Browser** is displayed on the left side of the screen and is used to display the available working modes. The layout of the working modes is similar to the main menu.



The operating modes are displayed hierarchically in the browser. To activate the required action, you must click on the entry to open the lowest level operating modes. For example, by clicking on the Customer Orders command, the Customer Orders overview opens on the right side in the Main Window. To open the next required operating mode, click on it in the browser and the specified operating mode will open in the Main Window.

You can hide or show the browser using toolbar commands  or the  button.

# Main menu

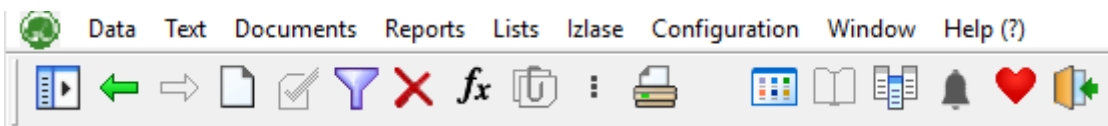
Activation of all program activities is available in the main menu. The main menu is available for the entire duration of the computer program. Using the main menu is similar to using Windows programs.

The operating modes in the program are grouped under the menus Data, Text, Documents, Reports, Lists, Favorites, Configuration, Window, Help. All these operating modes can also be found using the Browser.

The most commonly used main menu commands are also available from the toolbar of your computer program.

## Toolbar

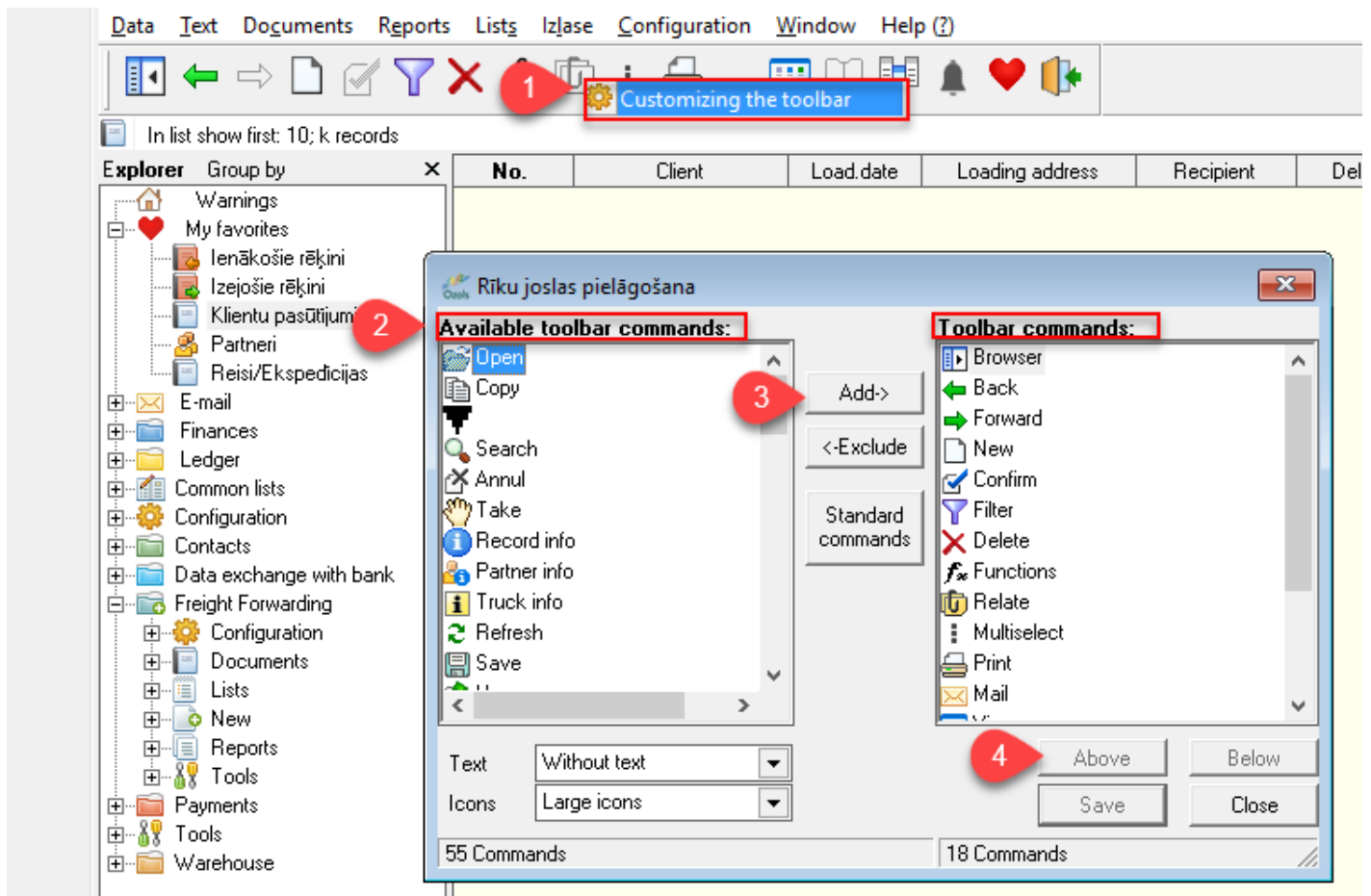
The toolbar is a graphical layout of command buttons that allows you to perform the required action faster and more clearly.



**If the toolbar is not visible** , it can be set from the menu using the **MENU**  
► **Configuration** ► **Toolbar** ► **Commands**

## Customize Toolbar

**The toolbar can be configured.** Place the mouse over the Toolbar. Click on the right button and select **Customize Toolbar**.



Revision #8

Created Mon, May 23, 2022 8:53 AM by [Janis Veldre](#)

Updated Tue, Aug 9, 2022 1:52 PM by [Janis Veldre](#)